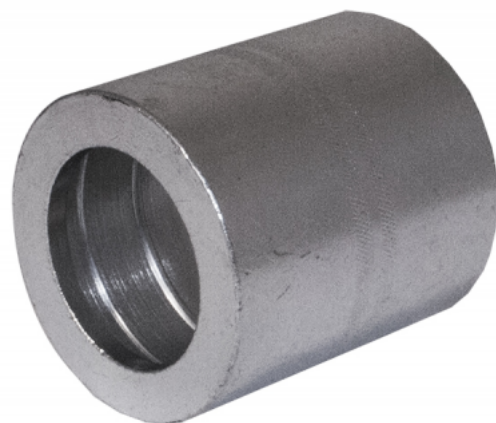




4200-40

FERRULE EN 854 R3



SPECIFICATIONS

Material Steel

DESCRIPTION

The Ferrule EN 854 R3 is a steel ferrule designed for hydraulic coupling applications. It features a non-skive function, ensuring reliable and secure hose connections. Part of the Coupling - Hydraulic family, this ferrule offers durability and precision for demanding hydraulic systems.

Item number	Size 1
42004004	1/4"
42004005	5/16"
42004006	3/8"
42004008	1/2"
42004010	5/8"
42004012	3/4"
42004016	1"
42004020	1 1/4"
42004024	1 1/2"