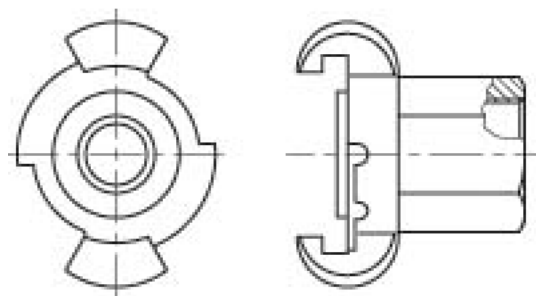


5001-23

CLAW COUPLING AIR - BSP FEMALE, STAINLESS STEEL



SPECIFICATIONS

Material	Stainless steel	Shape	Straight
Standard	DIN 3489	Connection 1 - Sealing	Gasket

DESCRIPTION

The Claw fitting air - BSP female, made from durable stainless steel, features a straight coupling shape and complies with DIN 3489 standards. It connects via a 42mm claw fitting with gasket sealing on one end and a female G-threaded connection on the other, ensuring reliable, secure air hose connections within the Coupling - Claw family.

Item number	Type 1	Size 1	Type 2	Thread type 2	Size 2	Type 2	Wp
50012306	Claw fitting 42mm	Claw 42	Thread	G	3/8"	Female	1 MPa
50012308	Claw fitting 42mm	Claw 42	Thread	G	1/2"	Female	1 MPa
50012312	Claw fitting 42mm	Claw 42	Thread	G	3/4"	Female	1 MPa
50012316	Claw fitting 42mm	Claw 42	Thread	G	1"	Female	1 MPa