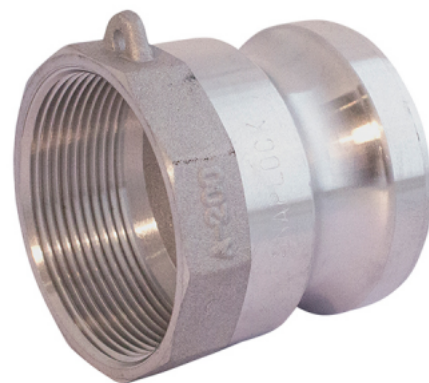




5020-00

CAMLOCK A MALE - BSP THREAD FEMALE, ALUMINUM



SPECIFICATIONS

Material	Aluminum	Connection 1 - Camlock type	A
Shape	Straight	Shape	Straight

Related Item: 1435-00, 1439-00, 1469-20

DESCRIPTION

The Camlock A male with BSP thread female is a straight fitting from the Coupling - Camlock family, crafted from durable aluminum. It features a male camlock connection type A on one end and a female BSP (G thread type) threaded connection on the other, combining secure camlock functionality with reliable threaded attachment.

Item number	Type 1	Size 1	Type 1	Thread type 2	Type 2	Size 2	Type 2	Wp
50200008	Camlock	1/2"	Male	G	Thread	1/2"	Female	1 MPa
50200012	Camlock	3/4"	Male	G	Thread	3/4"	Female	1 MPa
50200016	Camlock	1"	Male	G	Thread	1"	Female	1 MPa
50200020	Camlock	1 1/4"	Male	G	Thread	1 1/4"	Female	1 MPa
50200024	Camlock	1 1/2"	Male	G	Thread	1 1/2"	Female	1 MPa
50200032	Camlock	2"	Male	G	Thread	2"	Female	1 MPa
50200040	Camlock	2 1/2"	Male	G	Thread	2 1/2"	Female	1 MPa
50200048	Camlock	3"	Male	G	Thread	3"	Female	1 MPa
50200064	Camlock	4"	Male	G	Thread	4"	Female	1 MPa
50200080	Camlock	5"	Male	G	Thread	5"	Female	0.5 MPa
50200096	Camlock	6"	Male	G	Thread	6"	Female	0.5 MPa
50200200	Camlock	8"	Male	G	Thread	8"	Female	1 MPa