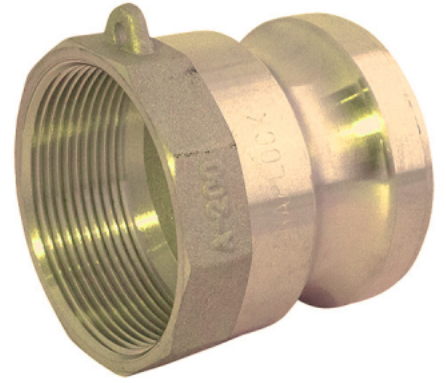




5020-10

CAMLOCK A MALE - BSP THREAD FEMALE, BRASS



SPECIFICATIONS

Material	Brass	Connection 1 - Camlock type	A
Shape	Straight	Shape	Straight

Related Item: 1435-00, 1439-00, 1469-20

DESCRIPTION

The Camlock A male - BSP thread female Brass fitting is a straight-shaped connector from the Coupling - Camlock family. It features a male camlock type A connection and a female BSP (G thread type) threaded connection. Made of durable brass, this coupling ensures reliable performance and corrosion resistance in various fluid transfer applications.

Item number	Type 1	Size 1	Type 1	Thread type 2	Type 2	Size 2	Type 2	Wp
50201008	Camlock	1/2"	Male	G	Thread	1/2"	Female	1 MPa
50201012	Camlock	3/4"	Male	G	Thread	3/4"	Female	1 MPa
50201016	Camlock	1"	Male	G	Thread	1"	Female	1 MPa
50201020	Camlock	1 1/4"	Male	G	Thread	1 1/4"	Female	1 MPa
50201024	Camlock	1 1/2"	Male	G	Thread	1 1/2"	Female	1 MPa
50201032	Camlock	2"	Male	G	Thread	2"	Female	1 MPa
50201040	Camlock	2 1/2"	Male	G	Thread	2 1/2"	Female	1 MPa
50201048	Camlock	3"	Male	G	Thread	3"	Female	1 MPa
50201064	Camlock	4"	Male	G	Thread	4"	Female	1 MPa
50201080	Camlock	5"	Male	G	Thread	5"	Female	0.5 MPa