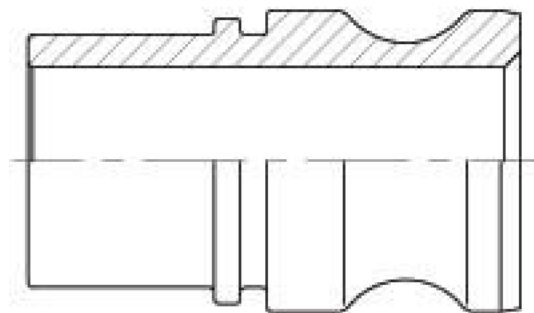




5024-50

CAMLOCK EC MALE - HOSE FITTING FOR SAFETY CLAMP, STAINLESS STEEL



SPECIFICATIONS

Material Stainless Steel AISI 316
Shape Straight

Connection 1 - Camlock type EC
Shape Straight

Related Item: 1435-00, 1439-00, 1469-20

DESCRIPTION

The Camlock EC male hose fitting is crafted from durable Stainless Steel AISI 316, ensuring high corrosion resistance and strength. Designed with a straight fitting shape, it features a male EC-type camlock connection on one end and a safety clamp hose fitting on the other. This product belongs to the Coupling - Camlock family, combining reliability and secure hose attachment.

Item number	Type 1	Size 1	Type 1	Type 2	Size 2	Connection 2 - Hose type	Size 2	Wp
50245012	Camlock	3/4"	Male	Hose Fitting	3/4"	Safety Clamp	19 mm	1.6 MPa
50245016	Camlock	1"	Male	Hose Fitting	1"	Safety Clamp	25 mm	1.6 MPa
50245020	Camlock	1 1/4"	Male	Hose Fitting	1 1/4"	Safety Clamp	32 mm	1.6 MPa
50245024	Camlock	1 1/2"	Male	Hose Fitting	1 1/2"	Safety Clamp	38 mm	1.6 MPa
50245032	Camlock	2"	Male	Hose Fitting	2"	Safety Clamp	51 mm	1.6 MPa
50245040	Camlock	2 1/2"	Male	Hose Fitting	2 1/2"	Safety Clamp	63.5 mm	1.6 MPa
50245048	Camlock	3"	Male	Hose Fitting	3"	Safety Clamp	75 mm	1.6 MPa
50245064	Camlock	4"	Male	Hose Fitting	4"	Safety Clamp	100 mm	1.6 MPa