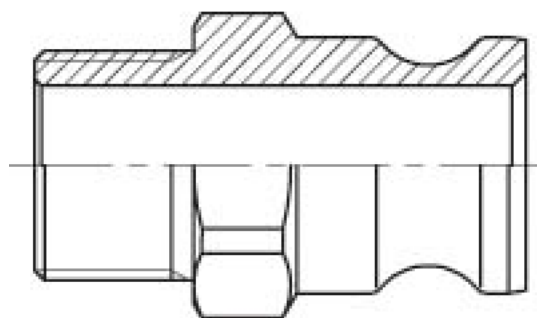




5025-10

CAMLOCK A MALE - BSP THREAD MALE, BRASS



SPECIFICATIONS

Material Brass
Shape Straight

Connection 1 - Camlock type F
Shape Straight

Related Item: 1435-00, 1439-00, 1469-20

DESCRIPTION

The Camlock A male - BSP thread male Brass fitting is a straight-shaped connector from the Coupling - Camlock family. It features a male camlock (type F) connection on one end and a male BSP (G thread) threaded connection on the other. Crafted from durable brass, this fitting ensures reliable performance and corrosion resistance in various industrial applications.

| Item number | Type 1 | Size 1 | Type 1 | Thread type 2 | Type 2 | Size 2 | Type 2 | Wp |
|-------------|---------|--------|--------|---------------|--------|--------|--------|-------|
| 50251012 | Camlock | 3/4" | Male | G | Thread | 3/4" | Male | 1 MPa |
| 50251016 | Camlock | 1" | Male | G | Thread | 1" | Male | 1 MPa |
| 50251020 | Camlock | 1 1/4" | Male | G | Thread | 1 1/4" | Male | 1 MPa |
| 50251024 | Camlock | 1 1/2" | Male | G | Thread | 1 1/2" | Male | 1 MPa |
| 50251032 | Camlock | 2" | Male | G | Thread | 2" | Male | 1 MPa |
| 50251040 | Camlock | 2 1/2" | Male | G | Thread | 2 1/2" | Male | 1 MPa |
| 50251048 | Camlock | 3" | Male | G | Thread | 3" | Male | 1 MPa |
| 50251064 | Camlock | 4" | Male | G | Thread | 4" | Male | 1 MPa |