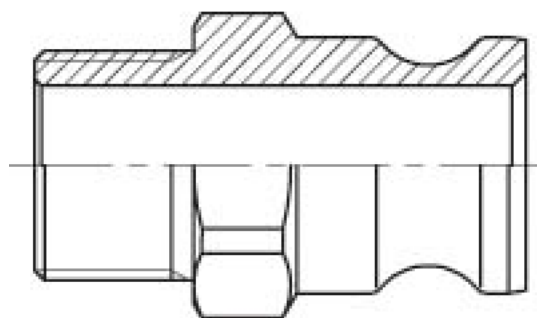




5025-30

CAMLOCK A MALE - BSP THREAD MALE, PP



SPECIFICATIONS

Material PP
Shape Straight

Connection 1 - Camlock type F
Shape Straight

Related Item: 1435-00, 1439-00, 1469-20

DESCRIPTION

The Camlock A male - BSP thread male PP is a straight fitting from the Camlock family, featuring a male camlock connection type F and a male threaded G connection. Constructed from durable polypropylene (PP), this coupling ensures reliable performance and chemical resistance, making it suitable for various industrial fluid transfer applications.

Item number	Type 1	Size 1	Type 1	Thread type 2	Type 2	Size 2	Type 2	Wp
50253008	Camlock	1/2"	Male	G	Thread	1/2"	Male	0.4 MPa
50253012	Camlock	3/4"	Male	G	Thread	3/4"	Male	0.4 MPa
50253016	Camlock	1"	Male	G	Thread	1"	Male	0.4 MPa
50253020	Camlock	1 1/4"	Male	G	Thread	1 1/4"	Male	0.4 MPa
50253024	Camlock	1 1/2"	Male	G	Thread	1 1/2"	Male	0.4 MPa
50253032	Camlock	2"	Male	G	Thread	2"	Male	0.4 MPa
50253048	Camlock	3"	Male	G	Thread	3"	Male	0.4 MPa
50253064	Camlock	4"	Male	G	Thread	4"	Male	0.4 MPa