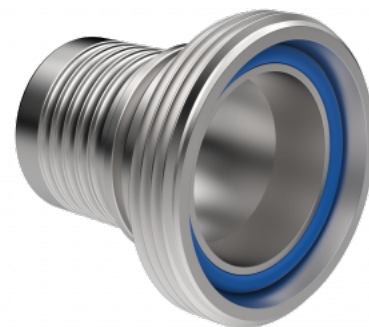




# 5053-35

## DIN DAIRY FITTING MALE TREAD - HOSE FITTING MULTITAIL, STAINLESS STEEL



### SPECIFICATIONS

|                 |                          |                                 |                         |
|-----------------|--------------------------|---------------------------------|-------------------------|
| <b>Material</b> | Stainless Steel AISI 316 | <b>Connection 1 - Sealing</b>   | NBR                     |
| <b>Standard</b> | DIN 11851                | <b>Connection 2 - Hose type</b> | Ferrule or Safety Clamp |
| <b>Shape</b>    | Straight                 |                                 |                         |

### DESCRIPTION

DIN MULTITAIL hose fittings are high-quality, standardized couplings designed for secure and hygienic fluid handling. Known for their precision and durability, they feature a smooth, gap-free design that prevents contamination, making them ideal for industries such as food processing, beverage production, and pharmaceuticals. These fittings are easy to assemble and disassemble, ensuring leak-proof connections and facilitating efficient maintenance. With their robust construction and compliance with strict international standards, DIN fittings provide a reliable solution for critical applications where safety and cleanliness are essential.

| Item number | Type 1      | Thread type 1 | Size 1            | Type 1 | Type 2       | Size 2 | Wp      |
|-------------|-------------|---------------|-------------------|--------|--------------|--------|---------|
| 50533512    | Dairy - DIN | RD            | 44 mm 1/6" pitch  | Male   | Hose Fitting | 19 mm  | 4 MPa   |
| 50533516    | Dairy - DIN | RD            | 52 mm 1/6" pitch  | Male   | Hose Fitting | 25 mm  | 4 MPa   |
| 50533520    | Dairy - DIN | RD            | 58 mm 1/6" pitch  | Male   | Hose Fitting | 32 mm  | 4 MPa   |
| 50533524    | Dairy - DIN | RD            | 65 mm 1/6" pitch  | Male   | Hose Fitting | 38 mm  | 4 MPa   |
| 50533532    | Dairy - DIN | RD            | 78 mm 1/6" pitch  | Male   | Hose Fitting | 51 mm  | 2.5 MPa |
| 50533540    | Dairy - DIN | RD            | 95 mm 1/6" pitch  | Male   | Hose Fitting | 63 mm  | 2.5 MPa |
| 50533548    | Dairy - DIN | RD            | 110 mm 1/6" pitch | Male   | Hose Fitting | 76 mm  | 2.5 MPa |
| 50533564    | Dairy - DIN | RD            | 130 mm 1/6" pitch | Male   | Hose Fitting | 102 mm | 2.5 MPa |