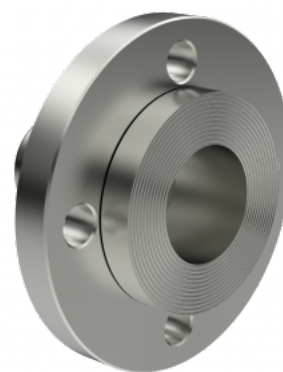


5059-51

FLANGE PN16 SWIVEL - HOSE FITTING MULTITAIL, STEEL



SPECIFICATIONS

Material	Steel	Connection 2 - Hose type	Ferrule or Safety Clamp
Shape	Straight		

DESCRIPTION

MULTITAIL swivel flange hose fittings are versatile components designed for flexible and efficient connections in industrial hose systems. Featuring a rotating flange, they allow for precise alignment during installation, simplifying assembly and reducing the risk of misalignment. Constructed from durable materials such as stainless steel or zinc-plated steel, MULTITAIL swivel flange fittings offer excellent resistance to high pressure, temperature, and corrosion. Their design ensures a secure, leak-free seal while accommodating movement and vibration within the system. Widely used in industries such as oil and gas, marine, chemical processing, and construction, these fittings are valued for their adaptability, reliability, and ease of maintenance in demanding environments.

Item number	Type 1	Size 1	Type 2	Size 2	Wp
50595116	Flange	DN 25	Hose Fitting	25 mm	4 MPa
50595120	Flange	DN 32	Hose Fitting	32 mm	4 MPa
505951200	Flange	DN 200	Hose Fitting	203 mm	1 MPa
50595124	Flange	DN 40	Hose Fitting	38 mm	4 MPa
50595132	Flange	DN 50	Hose Fitting	51 mm	1.6 MPa
50595140	Flange	DN 65	Hose Fitting	63.5 mm	1.6 MPa
50595148	Flange	DN 80	Hose Fitting	76 mm	1.6 MPa
50595164	Flange	DN 100	Hose Fitting	102 mm	1.6 MPa
50595180	Flange	DN 125	Hose Fitting	127 mm	1.6 MPa
50595196	Flange	DN 150	Hose Fitting	152 mm	1.6 MPa