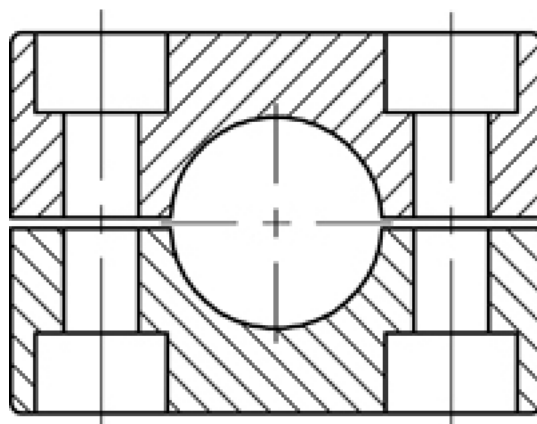




# 5390-0xPP

## CLAMPS



### SPECIFICATIONS

**Material** PP **Design** Single

### DESCRIPTION

Clamps from the Standard Pipe series feature a single design crafted from durable polypropylene (PP). This product belongs to the Clamp - Pipe family, offering reliable performance and strength for secure pipe fastening applications. Its material ensures resistance to wear and chemical exposure, making it suitable for various environments.

Item number	Clamp - Dimension - Pipe outer diameter
539001064PP	6.4 mm
53900106PP	6 mm
53900108PP	8 mm
53900110PP	10 mm
53900112PP	12 mm
539002095PP	9.5 mm
539003127PP	12.7 mm
539003135PP	13.5 mm
53900314PP	14 mm
53900315PP	15 mm
53900316PP	16 mm
539003172PP	17.2 mm
53900318PP	18 mm
53900419PP	19 mm
53900420PP	20 mm
539004213PP	21.3 mm
53900422PP	22 mm
53900425PP	25 mm
539005269PP	26.9 mm
53900528PP	28 mm

Item number	Clamp - Dimension - Pipe outer diameter
53900530PP	30 mm
53900632PP	32 mm
53900635PP	35 mm
53900638PP	38 mm
53900642PP	42 mm
539007508PP	50.8 mm
53900750PP	50 mm
539008603PP	60.3 mm
539009889PP	88.9 mm