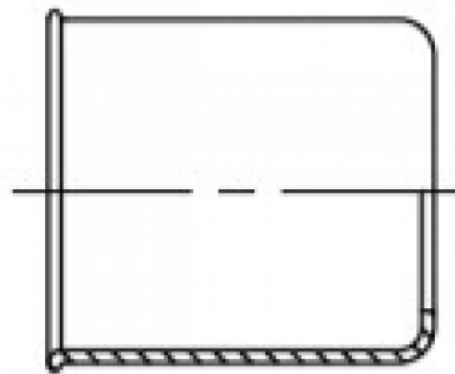




5800-xx

FERRULE, STEEL



SPECIFICATIONS

Material Steel **Shape** Ferrule

DESCRIPTION

The Ferrule, steel, is a durable coupling accessory designed for industrial applications. Crafted from high-quality steel, this ferrule ensures robust connection performance and long-lasting reliability. Its precise shape facilitates secure coupling, making it an essential component in industrial piping and machinery systems.

Item number	Type 1	Size 1	ID	Size min.	Size max.	Wp
58000002	Ferrule	5.5	9 mm	9 mm	9 mm	6.5 MPa
58000003	Ferrule	6.2	10 mm	10 mm	10 mm	6.5 MPa
58000004	Ferrule	7.2	11 mm	11 mm	11 mm	6.5 MPa
58000005	Ferrule	7.7	13 mm	13 mm	13 mm	6.5 MPa
58000006	Ferrule	9.2	13.5 mm	13.5 mm	13.5 mm	5.5 MPa
58000008	Ferrule	11.4	16 mm	16 mm	16 mm	5 MPa
58000009	Ferrule	11.4	17 mm	17 mm	17 mm	5 MPa
58000010	Ferrule	14.2	18 mm	18 mm	18 mm	5 MPa
58000011	Ferrule	14.2	19.5 mm	19.5 mm	19.5 mm	5 MPa
58000012	Ferrule	14.2	20 mm	20 mm	20 mm	5 MPa
58000013	Ferrule	17.2	23 mm	23 mm	23 mm	4 MPa
58000014	Ferrule	17.2	24.5 mm	24.5 mm	24.5 mm	4 MPa
58000016	Ferrule	19.7	26.5 mm	26.5 mm	26.5 mm	3.5 MPa
58000017	Ferrule	20.5	28 mm	28 mm	28 mm	3.5 MPa
58000020	Ferrule	23.7	32 mm	32 mm	32 mm	3.5 MPa
58000025	Ferrule	29.6	40 mm	40 mm	40 mm	3.5 MPa
58000034	Ferrule	29.6	36.5 mm	38 mm	38 mm	
58001002	Ferrule	6.2	10.5 mm	10.5 mm	10.5 mm	6.5 MPa
58001003	Ferrule	5.5	10.5 mm	10.5 mm	10.5 mm	6.5 MPa
58001004	Ferrule	7.3	11.5 mm	11.5 mm	11.5 mm	6.5 MPa

Item number	Type 1	Size 1	ID	Size min.	Size max.	Wp
58001006	Ferrule	9.3	14.5 mm	14.5 mm	14.5 mm	5.5 MPa
58001008	Ferrule	11.2	15 mm	15 mm	15 mm	5 MPa
58001009	Ferrule	11.3	17.5 mm	17.5 mm	17.5 mm	5 MPa
58001012	Ferrule	17.2	22 mm	22 mm	22 mm	4 MPa
58001016	Ferrule	16	28 mm	28 mm	28 mm	3.5 MPa
58001020	Ferrule	23.7	30.5 mm	30.5 mm	30.5 mm	3.5 MPa
58001106	Ferrule	9.3	14.5 mm	14.5 mm	14.5 mm	5.5 MPa
58001112	Ferrule	16.9	24.5 mm	24.5 mm	24.5 mm	5.5 MPa
58001116	Ferrule	23.7	30 mm	30 mm	30 mm	3.5 MPa
58001120	Ferrule	23.9	33 mm	33 mm	33 mm	3.5 MPa
58001204	Ferrule	8.8	12.5 mm	12.5 mm	12.5 mm	6.5 MPa