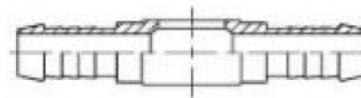




5898-xx

HOSE FITTING BANJO - HOSE X2, STEEL



SPECIFICATIONS

Material	Steel	Coupling - Function	Double
Shape	Banjo		

DESCRIPTION

The Hose fitting Banjo - hose x2, steel is a durable industrial adapter designed for double coupling applications. Made from robust steel, it features a Banjo-shaped connection on one end and a hose fitting on the other, ensuring reliable and secure connections in demanding environments. This fitting belongs to the coupling family, offering strength and versatility for various industrial uses.

Item number	Type 1	Size 1	Type 2	Size 2	Wp
58980803	Banjo	8x1	Hose Fitting	3	6.5 MPa
58981004	Banjo	10x1	Hose Fitting	4	6.5 MPa
58981206	Banjo	12x1,5	Hose Fitting	6	5.5 MPa
58981408	Banjo	14x1,5	Hose Fitting	8	5 MPa
58981610	Banjo	16x1,5	Hose Fitting	10	5 MPa