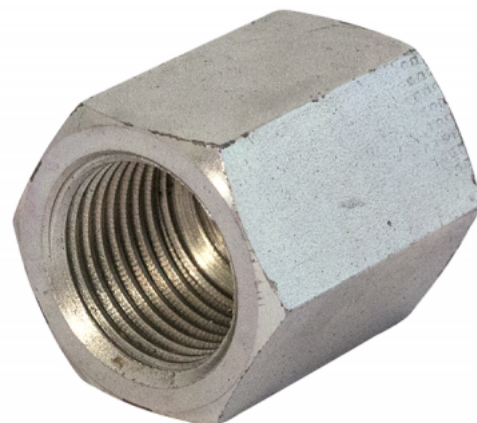


# 7011-xx

## STRAIGHT BUSHING G F – G F



### SPECIFICATIONS

<b>Type 1</b>	Female	<b>Shape</b>	Straight
<b>Type 2</b>	Female	<b>Material</b>	Steel

### DESCRIPTION

The Straight bushing G F – G F is a steel coupling adapter designed with a straight shape, featuring female connections on both ends. It belongs to the Coupling - Adapter BSP/mm/npt family, offering durable and reliable performance for secure pipe or hose connections. Its robust steel construction ensures long-lasting strength and resistance.

Item number	Size 1	Size 2	Weight
70110202	G 1/8" Female	G 1/8" Female	0.02 kg
70110204	G 1/8" Female	G 1/4" Female	0.04 kg
70110206	G 1/8" Female	G 3/8" Female	0.06 kg
70110404	G 1/4" Female	G 1/4" Female	0.04 kg
70110406	G 1/4" Female	G 3/8" Female	0.06 kg
70110408	G 1/4" Female	G 1/2" Female	0.09 kg
70110606	G 3/8" Female	G 3/8" Female	0.05 kg
70110608	G 3/8" Female	G 1/2" Female	0.09 kg
70110612	G 3/8" Female	G 3/4" Female	0.13 kg
70110808	G 1/2" Female	G 1/2" Female	0.08 kg
70110810	G 1/2" Female	G 5/8" Female	0.12 kg
70110812	G 1/2" Female	G 3/4" Female	0.12 kg
70110816	G 1/2" Female	G 1" Female	0.15 kg
70111010	G 5/8" Female	G 5/8" Female	0.1 kg
70111012	G 5/8" Female	G 3/4" Female	0.11 kg
70111212	G 3/4" Female	G 3/4" Female	0.1 kg
70111216	G 3/4" Female	G 1" Female	0.27 kg
70111616	G 1" Female	G 1" Female	0.2 kg
70111620	G 1" Female	G 1 1/4" Female	0.39 kg
70112020	G 1 1/4" Female	G 1 1/4" Female	0.29 kg

Item number	Size 1	Size 2	Weight
70112024	G 1 1/4" Female	G 1 1/2" Female	0.41 kg
70112424	G 1 1/2" Female	G 1 1/2" Female	0.31 kg
70112432	G 1 1/2" Female	G 2" Female	0.88 kg
70113232	G 2" Female	G 2" Female	0.65 kg
70114040	G 2 1/2" Female	G 2 1/2" Female	0.01 kg
70114848	G 3" Female	G 3" Female	0.01 kg