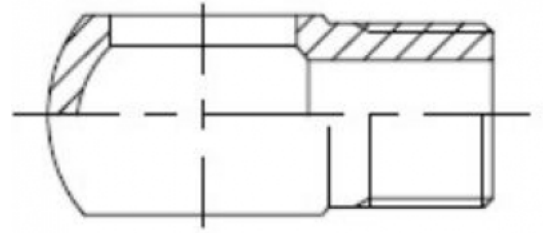




7082-xx

BANJO – METRIC



SPECIFICATIONS

Type 1	Banjo	Shape	Banjo
Type 2	Male	Material	Steel

DESCRIPTION

The Banjo – Metric is a steel coupling adapter designed for reliable connection with a male banjo fitting. Part of the Coupling - Adapter BSP/mm/npt family, it offers durable performance and precise metric compatibility, ensuring secure and efficient fluid transfer in various industrial applications.

Item number	Size 1	Size 2	Weight
70821414	M 14x1,5	14 mm Male	0.03 kg
70821818	M 18x1,5	18 mm Male	0.06 kg