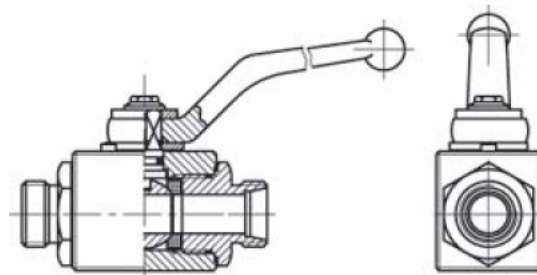


# 8032-xx

## 2-WAY BALL VALVE, SKL-CONNECTION STEEL



### SPECIFICATIONS

<b>Material</b>	Steel	<b>Temp min</b>	-20 °C
<b>Shape</b>	Straight	<b>Temp max</b>	100 °C
<b>Design</b>	Valve	<b>Type 1</b>	Thread
<b>Sealing</b>	POM/NBR	<b>Type 2</b>	Thread

### DESCRIPTION

The 2-way ball valve with SKL-connection is crafted from durable steel, featuring a straight coupling design. It includes male threaded connections on both ends, ensuring secure and reliable thread-type M fittings. Part of the Coupling - Valve family, this valve offers robust performance suitable for various industrial applications.

Item number	DN size	Thread type 1	Size 1	Type 1	Thread type 2	Size 2	Type 2	Wp
80320612	4	M	12x1,5	Male	M	12x1,5	Male	50 MPa
80320814	6	M	14x1,5	Male	M	14x1,5	Male	50 MPa
80321016	8	M	16x1,5	Male	M	16x1,5	Male	50 MPa
80321218	10	M	18x1,5	Male	M	18x1,5	Male	50 MPa
80321522	12	M	22x1,5	Male	M	22x1,5	Male	50 MPa
80321826	16	M	26x1,5	Male	M	26x1,5	Male	40 MPa
80322230	20	M	30x2	Male	M	30x2	Male	40 MPa
80322836	25	M	36x2	Male	M	36x2	Male	40 MPa
80323545	32	M	45x2	Male	M	45x2	Male	40 MPa
80324252	40	M	52x2	Male	M	52x2	Male	40 MPa